

User Manual

iPin Spatial Ruler Pro

- iPinRulerPro installation

iPinRulerPro installation

- ① Get the parts ready. See all in the photo.



- ② Align the alignment paper card at the lower edge of the camera lens and in the central part of the phone.



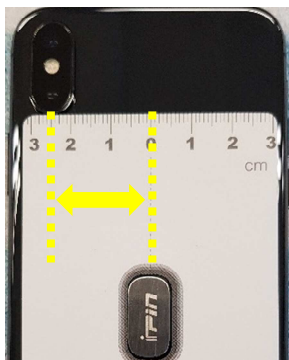
- ③ Stick the magnet piece to the elliptical hole in the alignment paper card.



iPinRulerPro installation

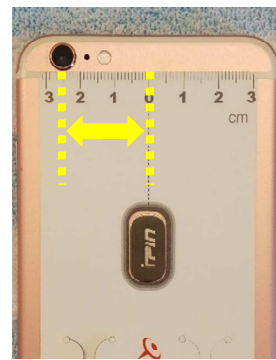
- ④ Write down the distance from the center of camera lens to the center of the card.

***This value is needed for calibration later.**



note:

2.5cm



note:

2.5cm



note:

0 cm



note:

0 cm

- ⑤ Attach iPin Ruler Pro on the magnet with your phone.

